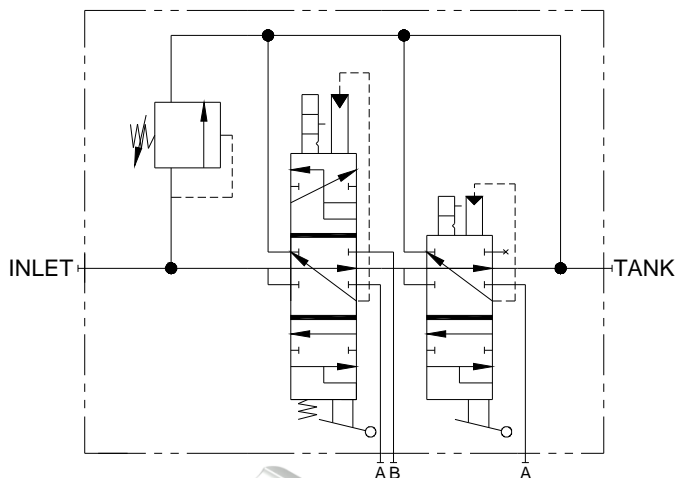


MONO BLOCK DIRECTIONAL AUTO-CYCLE VALVE “LA”



FEATURES:

- **AUTOCYCLE A DOUBLE ACTING CYLINDER** with one input from the user.
- **ADJUSTABLE HYDRAULIC KICKOUT** on both spools.
- **O’RING PORTS** to eliminate leakage.
- **POWER BEYOND CAPABILITY** to fit your multi valve circuits.
- **PRECISION GROUND IOSSO PLATED SPOOL** that assures long life.

SPECIFICATIONS:

- **18 gpm (68.0 lpm) Nominal Capacity.**
- **Rated up to 2000 psi kickout (138 bar).**
- **Port Sizes-Inlet/Outlet #12SAE (1-1/16-12).**
-Work Ports #10SAE (7/8-14).
- **10 Micron Filtration Recommended.**
- **Weight - 14 lbs. (6.4 kg).**

MATERIALS:

- **Cast Iron Body**
- **Buna N O’Rings**
- **IOSSO Plated Steel Spools**
- **Black Nylon Ball Knob**

LA – GENERAL INFORMATION

The Brand autocycle valve will cycle a double acting cylinder from retracted to fully extended and then back to fully retracted using two spools. The first spool can be used to manually extend and retract cylinder while the second spool only retracts the cylinder. Pushing both levers forward starts the autocycle process. The first hydraulic detent can be adjusted up to 2000 PSI (103 bar) and the second detent should always be set 500 PSI (34 bar) above the first detent setting. The valve is also field convertible to closed center and power beyond.

SPOOL ACTION – The first spool uses a spring center hydraulic detent. This will hold the spool in detent until the cylinder is fully extended or until the pressure reaches the detent pressure setting causing it to return to neutral. The first spool is spring centering in the other direction. The second spool uses a hydraulic detent. This spool can only be shifted in the one direction. The cylinder will retract until it is fully retracted or until the detent pressure setting is reached causing it to return to neutral.

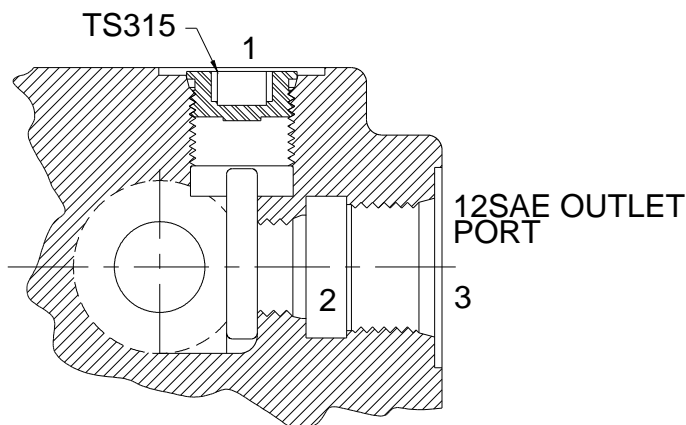
ACTUATORS – Lever handle (J) pressurizes the “A” port when the handle is pushed towards the valve body. No actuator (M) is used when it is necessary to connect the spool to an external actuator (J type spool).

OPTIONS – Power beyond (W) offers high pressure carryover for valves downstream. The TS series is also field convertible to power beyond. Area differential relief cartridge (B) is available in pressure intervals of 100 psi (6.9 bar).

GENERAL CONVERSION INFORMATION

CLOSED CENTER CONVERSION – To have the casting in closed center operation, both the top port (1) and internal port (2) must be plugged. Take the TS315 plug from the top port (1) and insert it into the internal port (2). Then plug the top port (1) with any std. SAE plug (7/8 – 14) or purchase a plug from the factory. Closed center blocks “Pump” only, the condition of ports A and B depend on the spool type. (See illustration)

POWER BEYOND CONVERSION – To convert the valve to power beyond operation, take the TS315 plug from the top port (1) and insert it into the internal port (2). Next, plumb a #10 SAE fitting from the top port (1) to the adjoining valve. Lastly, run a line from the #12 SAE outlet port (3) to the reservoir. (See illustration)



LA – CREATING A MODEL CODE FOR LA’S:

LA12TGTH

HANDLE OPTION:

J – Lever handle
M – No actuator

RELIEF OPTION:

B – Adjustable relief
(2300 psi (159 bar) standard setting)
N – No relief

OPTIONS:

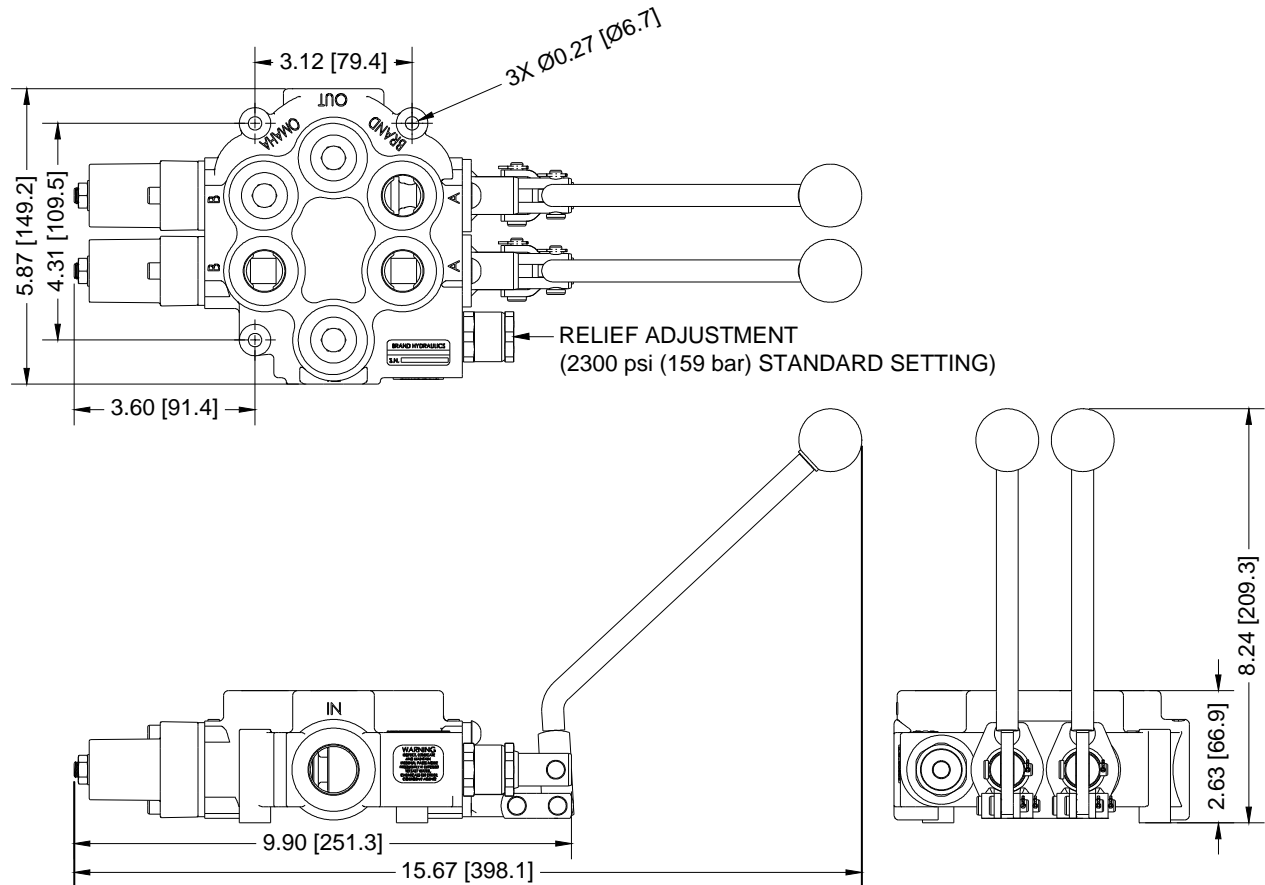
W – Power beyond
C – Closed center
Omit – Open center

LA – COMPLETE LIST OF OPTIONS AND ACCESSORIES:

- 34R10**..... Area differential relief cartridge set at 1000 psi (69.0 bar). (Available in pressure setting increments of 100 psi (6.9 bar), please specify desired setting as per this example)
- TS-HJ**..... TS handle kit with ball knob. (One per spool)
- TS-HJBL**..... TS handle kit double bend, away, offset left with ball knob. (One per spool)
- TS-HJBR**..... TS handle kit double bend, away, offset right with ball knob. (One per spool)
- TS-HJS**..... TS straight handle kit with ball knob. (One per spool)
- TS-NB**..... Plug for relief cavity.

DIMENSIONAL DATA: inches & [millimeters]

LA12TGTHJB



AUTO-CYCLE HYDRAULIC CIRCUIT:

